



columbus metropolitan club

27 years of
diversity • discussion • debate

Wednesday, June 2, 2004
Available online at www.sourcenews.com

100 E. Broad St., Suite 2350 • Columbus, OH 43215
Ph: (614) 464-3220 • Fax: (614) 464-9767 • E-mail: staff@columbusmetroclub.org

Today at CMC
Noon-1:15 p.m.

The Future of Street Level Retail in Downtown Columbus

Chris Boring, president, Boulevard Strategies; **Cleve Ricksecker**, projects director, CapitolSouth; **Bill Schottenstein**, principal, Arshot Investment Corp.
Moderated by: **Marc Conte**, director of research and information, Downtown Development Resource Center
Sponsored by: CVS Pharmacy

Upcoming CMC Forums

Wednesday, June 9
Growing Smarter Series
Growth and Social Equity

Presented in partnership with:
1000 Friends of Central Ohio
John a. Powell, executive director, Kirwan Institute for the Study of Race and Ethnicity at The Ohio State University and Williams Chair in Civil Rights and Civil Liberties at the Moritz College of Law

The concentration of poverty and minorities within city borders may seem like facts of economic life. In fact, the residential segregation that prevails in so many metropolitan regions derives from deliberate policy choices. **John a. Powell** will discuss how, by investing public and private resources into existing communities; encouraging the production of affordable housing; and eliminating barriers to affordable housing production; we can create more equitable communities.

Wednesday, June 16
Rebuilding the I-70/71
Downtown Split

Gordon Proctor, director, Ohio Department of Transportation
Sponsored by: Kokosing Construction, Inc. and EMH&T Engineers

The I-70/71 downtown split is the most congested, high-crash freeway location in the state. By June, ODOT expects to narrow the list of potential concepts to two or three for further analysis, before making final recommendations for the corridor by the end of the summer. Join us for an in-depth look at the final three proposed concepts for fixing the dreaded downtown split.

Wednesday, June 23
OSU Alumni Association:
New Leader, New Goals –
A Whole New Ballgame!

Archie Griffin, president and CEO, The Ohio State University Alumni Association

Taking the reins of the second largest alumni association in the country is no small task even for the country's only two-time Heisman Trophy winner, Archie Griffin. After six months in the role, Griffin will share his vision, goals, priorities and dreams for the OSU Alumni Association as it fulfills its mission to "Stay Connected, Make Ohio State Stronger."

Wednesday, June 30
NO FORUM

Wednesday, July 14
Debating the Patriot Act

Chuck Rosenberg, chief of staff to the Deputy Attorney General of the United States; **Jeff Gamso**, legal director, ACLU of Ohio,

On October 26, 2001, President Bush signed the USA Patriot Act into law. This law provides for sweeping new powers for both domestic law enforcement and international intelligence agencies. Some argue that in doing so we have eliminated the checks and balances that previously gave courts the opportunity to ensure that these powers were not abused. Join us for a powerful debate about the new law and its provisions.

Columbus Nugget

In 1926 a group of forward-thinking Ohio farmers organized the Ohio Farm Bureau Federation to advocate their political and business interests. The early Farm Bureau leaders believed established insurance companies were overcharging their farmer members for auto insurance. After all, farmers only drove their cars when the rural roads were passable.

Although they knew little about insurance techniques and practices, these intuitive men and women went door to door to sell their neighbors this new auto insurance. Today, Nationwide Insurance is one of the nation's leading property and casualty insurers with nearly \$7 billion in total premiums.

CMC Corporate Sponsors

Thanks to our generous sponsors for their ongoing commitment to CMC!

Major
Acloché
Building Connections
Conference 2003
Chester, Wilcox & Saxbe, LLP
Columbia Gas of Ohio
Columbus Downtown Development Corp./
Capitol South Community
Urban Redevelopment
Columbus State
Community College
CVS Pharmacy
DeVry University
Edward Howard & Co.
EMH&T Engineers
Fireproof Records Center
Franklin Park Conservatory
Help Wizards
Huntington Bank
Kokosing Construction, Inc.
National City Bank
NBBJ
The Ohio Historical Society
Pierre's Catering
Porter Wright
The Reese-Shackelford Foundation
SC Search Consultants
Schottenstein, Zox & Dunn
Thomas W. Ruff & Co.
Time Warner Cable
Wachovia Securities
WBNS 10TV

Pacesetter

American Dairy Assn.,
Dairy Council Mid-East
Battelle
Creative Design Solutions
Barbara K. Fergus
Bob Evans Farms
The Columbus Dispatch
The Columbus Foundation
Fifth Third Bank
Jones Day
Model Graphics & Media
Paul Werth Associates
Plante & Moran
SBC
Vorys, Sater, Seymour & Pease LLP

Advocate

David Bott
Harvard Loeb Fellowship
Janet E. Jackson
Theodore Simson

Next Wednesday at CMC • June 9

Growing Smarter Series

Race, Social Equity & Urban Sprawl

Presented in partnership with:



John a. Powell, executive director, Kirwan Institute for the Study of Race and Ethnicity at The Ohio State University and Williams Chair in Civil Rights and Civil Liberties at the Moritz College of Law

In a recent survey by the Fannie Mae Foundation, interstate highway investments were ranked as the number one promoter of suburban sprawl. The typical sprawling development pattern that follows has isolated low-income people, particularly people

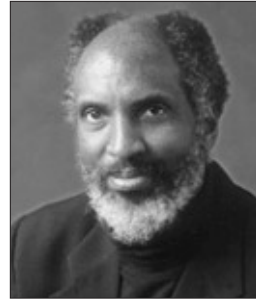
of color living in low-income communities, from broader regional opportunities.

Our public investments are a reflection of our social priorities. Much of the nation's infrastructure has been invested in new suburban communities, which have disproportionately benefited white and middle class neighborhoods. Cities that lose residents to the suburbs suffer from a decline in business investment and tax revenues, yet still must pay for a large physical infrastructure and the disproportionate social problems (crime, drug abuse, welfare) of those who cannot or do not leave.

Urban disinvestment, white flight and the concentration of poverty and minorities within city borders may seem like "natural"

facts of economic life – tragic but unavoidable. But in fact, the residential segregation that prevails in so many metropolitan regions derives from deliberate policy choices.

Sprawl's pernicious effect on social equity took two generations to create and it will surely take longer to fix. However, fix it we must. Join CMC and **John a. Powell** to find out how, by investing public and private resources into existing communities; encouraging the production of affordable housing; and eliminating barriers to affordable housing production; we can create more equitable communities.



powell

Still Time to Make Your Reservation! Join the hundreds of CMC members and prospective members who have already registered!

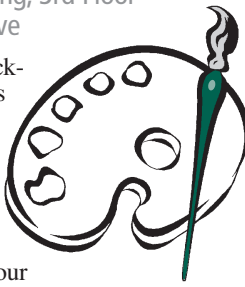
CMC's Annual Celebration of Columbus Arts Festival at Columbia Gas

Thursday, June 3 • 5:30-7:30 p.m.
Columbia Gas Building, 3rd Floor
200 Civic Center Drive

Celebrate with cocktails, hors d'oeuvres and live entertainment on the third floor terrace of the Columbia Gas building, overlooking the festivities.

We encourage our members to bring guests. Only \$10 for CMC members, \$8 for members who bring prospective members, and free to prospective members. Please R.S.V.P. by contacting the CMC staff by phone at (614) 464-3220 or by e-mail at staff@columbusmetroclub.org

Special thanks to Co-hosts the Ohio Citizens for the Arts & the Ohio Arts Foundation



May 19 at CMC ...

United Way Assesses Community Needs: "What Matters 2004"

"The research takes a holistic approach to community impact to address the needs of the whole person, whole family, whole neighborhood, whole community."

— Roberta Garber, Executive Director, Community Research Partners



CMC members Charlotte Glenn-Frey and Sandy Morckel continue the forum discussion.



Elfi DiBella, Huntington Bank, Steve Lackey, sponsor Fifth Third Bank, Janet Jackson, United Way of Central Ohio, Michael Banish, Community Research Partners, Roberta Garber, Community Research Partners, Thekla Shackelford, sponsor Reese-Shackelford Foundation, Don Shackelford, sponsor Fifth Third Bank.

"We're unveiling one of the most comprehensive needs assessments ever undertaken in this community. . . we really want this information out in the community. It doesn't do anyone any good if United Way keeps it."

— Janet Jackson, CEO & President United Way of Central Ohio

Check the forums YOU will be attending in the circle.
Write the NUMBER OF GUESTS attending in the square.

- | | | |
|--------------------------|--------------------|---------------------------------------|
| <input type="checkbox"/> | Wednesday, June 9 | Growth and Social Equity |
| <input type="checkbox"/> | Wednesday, June 16 | Rebuilding the I-70/71 Downtown Split |
| <input type="checkbox"/> | Wednesday, June 23 | Archie Griffin |
| <input type="checkbox"/> | Wednesday, June 30 | No Forum |
| <input type="checkbox"/> | Wednesday, July 14 | Debating the Patriot Act |

Member Name: _____

Name of Guest(s): _____

Daytime Phone: _____

Member's E-mail: _____

Add all member, guest and public fees selected.
Leave blank if you prefer CMC to calculate the cost.

Charge Amount: \$ _____

- ☐ Check Enclosed ☐ American Express ☐ Mastercard ☐ VISA

Card Number: _____ Exp. Date: _____

Cardholder Signature: _____

Forums begin at noon on Wednesdays and are held at the Athletic Club, 136 E. Broad St. (unless otherwise noted). Doors open at 11:30 a.m. for those who would like to network with other members and guests. Forums times, locations and costs may vary depending on the speaker. Always check the schedule for changes.

Member Forum Registration Fee: \$14 if registered by the Friday before the forum; \$17 thereafter. **Guest of a Member:** \$19 if registered by the Friday before the forum; \$22 thereafter. **General Public:** \$22 if registered by the Friday before the forum; \$25 thereafter.

Pre-Paid Reservations: All (members, guests, public) reservations must be pre-paid. American Express, Mastercard, VISA, checks and

cash are accepted. CMC has a long-standing member service of keeping credit card numbers on file for use only when authorized by the cardholder. To initiate this automatic billing service, contact the CMC office at (614) 464-3220. Reservations must be paid before the forum.

Cancellations: Cancellations must be made no later than the Monday before the forum for a full refund. You will be called if space is not available.

Guest Policy: CMC welcomes guests of members with a special fee. Our policy remains the same: a non-member may attend two forums per year as a guest of a member at \$19 per forum; thereafter that guest will be charged the general public fee of \$22 per forum. All guests' names are needed in advance.

Reservations are Easy!
Questions? Call (614) 464-3220

CMC forums are held at the Athletic Club of Columbus, 136 E. Broad St.

ALL CMC FORUMS ARE
OPEN TO THE PUBLIC.

FAX this form to (614) 464-9767, CALL our automated reservation line at (614) 545-3220 or SEND this form to CMC, 100 E. Broad St., Suite 2350, Columbus, OH 43215.

Forum Fees: Enter the number of attendees next to each forum title listed above. Early discount of \$3 applies if registered by the Friday before the forum.

	Member	Guest	Public
Early	\$14	\$19	\$22
Regular	\$17	\$22	\$25

Table Reservations: Select the number of seats needed at your table and circle the appropriate rate.

	Member	Guest	Public
8 Seats	\$135	N/A	\$180
10 Seats	\$170	N/A	\$225

Name on table: _____

Tickets: As a registered attendee, you will receive a ticket at the registration table for your meal. A server will collect your ticket.

Special Meals: CMC is on a rotating menu. If you would like information on the meal for a specific forum, please contact the CMC office at (614) 464-3220. CMC offers vegetarian means and fruit plates as alternative entries. Alternative entries must be pre-ordered.

Walk-Ins: CMC makes every effort to accommodate walk-in guests at forums. CMC cannot guarantee a seat and/or meal to walk-in guests. In order to determine seating/meal availability, walk-in guests may be asked to wait until just the beginning of the forum to register.